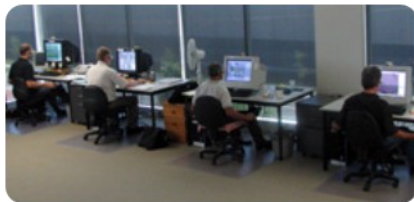


Products

Schlencker Mapping consults to a broad range of professionals and specialists. The data we produce is used every day for:

- Engineering Design
- Digital Terrain Modelling
- Flood Modelling
- Storm Surge Analysis
- GIS
- Asset Management
- Public Consultation
- Feasibility Studies
- Vegetation Monitoring
- Forestry Management
- EIAs
- Development Applications
- Planning Approvals

Schlencker Mapping is focused on providing the data and services most suited to your project. We invite you to arrange a time to meet with us to discuss your individual requirements. Please call one of our consultants on +61 7 3256 9955 to arrange a personal meeting.



VISIT US



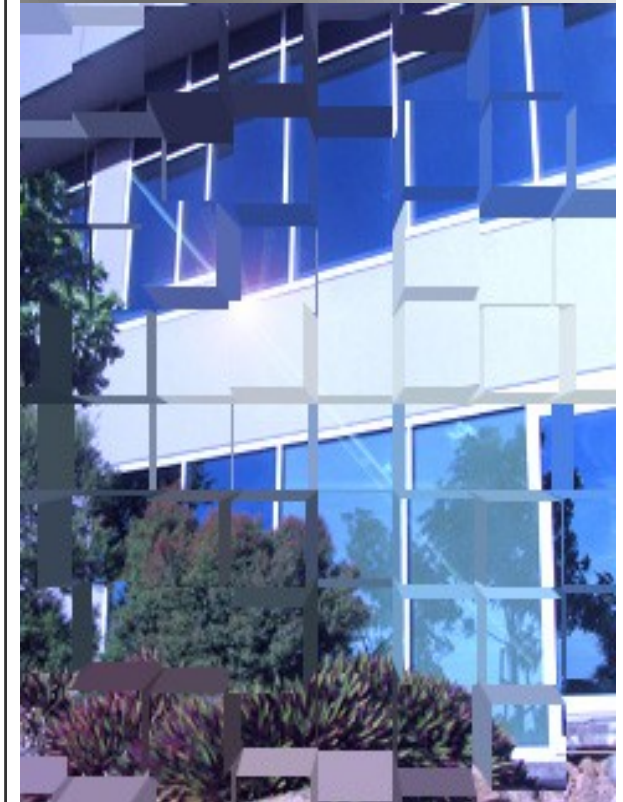
Head Office
Unit 4, 10 Depot Street
BANYO QLD 4014

Postal Address
PO Box 416
Zillmere QLD 4034

Phone: +61 7 3256 9955
Fax: +61 7 3256 9988
E-mail: info@schmap.com.au
Web: <http://www.schmap.com.au>



BE EN ISO 9001:2008



UNDERSTAND PROVIDE ENSURE



Capability & Services

Photogrammetry

Our services include:

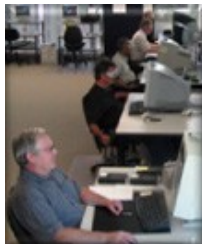
- Planning, & project management
- Acquisition of film and digital aerial photography
- Aerial Triangulation and block Adjustment
- High accuracy topographic mapping (+/- 50mm vertical accuracy)
- Compilation of DTMs
- Asset mapping
- Volume/stockpile measurements
- Mine/blast profile updates



Softcopy Photogrammetry

Schlencker Mapping uses digital softcopy Photogrammetric software which supports full photogrammetric production from triangulation and adjustment to final symbolised map and orthophoto output. It allows the creation of digital maps from aerial or satellite images. The system works in stereo mode or mono/mono+ mode.

GIS



Our GIS data includes:

- Orthophotos
- 3D visualisations
- DTMs
- Topographic feature data
- Cadastral/survey data

GIS Compatibility

Schlencker mapping has implemented state-of-the-art technology CAD/CAM software, including ESRI ArcGIS, AutoCAD and MapInfo to be able to provide a range of data in compatible formats for your GIS system.

Imagery

Our services include:

- Acquisition of film and digital aerial photography
- Film scanning
- Digital orthophoto
- Multi-spectral imagery
- Oblique photography
- 3D visualisation scenes and fly-throughs



Ortho Generation

Schlencker Mapping uses high quality orthophoto production soft-

ware which offers flexible, efficient functionality for producing colour-balanced orthophotos and broad area mosaics.

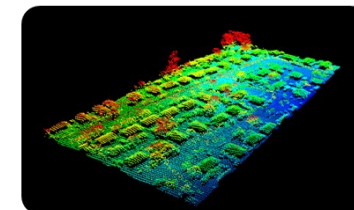
LIDAR

Our LIDAR services include but are not limited to:

- DEM acquisition of large areas.
- Asset and infrastructure projects (especially power and pipelines)
- Flood and storm surge mapping.
- Vegetation/forestry mapping.
- Determining biomass volume.

Airborne Laser Scanner

Schlencker Mapping provides LiDAR data using the latest in world leading Airborne Laser Terrain Mapping (ALTM) technology. The LiDAR technology is able to record 3D elevation data at 167kHz and features multi-pulse data capture enabling more efficient and economical data collection. Real-time medium format (39 Megapixel) digital camera imagery (in either Infra-Red or True Colour) can be captured simultaneously. Utilising the camera combined with the LiDAR provides a viable option in critical incident response or high volume aerial survey requests.



UNDERSTAND your business needs

PROVIDE results to achieve your goals

ENSURE the quality of your products